



Airend Overhauling Services

Full Compressor Servicer Range of Capabilities....



G C About Us

Only a few companies have the expertise to provide airend services, and Global Cynax proudly stands the best one among them. When it comes to servicing or refurbishing the airend of a screw air compressor, meticulous attention to detail and adherence to specific steps are paramount to ensure a complete restoration.

The airend, being the crucial component of a screw compressor, requires accurate diagnosis to identify any primary issues or problems before proceeding with the appropriate servicing. Any lack of precision in this task can result in significant damage to both the airend and the compressor unit.

Fortunately, at Global Cynax, our team of skilled engineers boasts an impressive track record of successfully revitalizing problematic airends, effectively bringing them back to a like-new operational condition.

Over the years, Global Cynax has successfully completed over 100+ airend refurbishment jobs encompassing a wide range of makes and models.

Our Overhauling Process of Airend

01



Pre-Visit Assessment:

One or two engineers from Global Cynax will visit the client's site to conduct a thorough inspection. They will prepare an assessment report and a detailed work plan. Based on this evaluation, Global Cynax will provide the client with a quote for the service and overhauling job.

02



Disassembly & Transport to Our Facility:

Disassembly and Transport to Our Facility: After receiving the work order, our team will disassemble the airend from the compressor and transport it to our facility using our own pickup van.

03



Inspection & Parts Replacement:

At this stage, our skilled engineers carefully inspect the airend to identify any defects. They repair and replace parts as needed, tuning the system for optimal performance. This meticulous process is crucial to the overhauling, and our engineers handle it with great care.

04



Re-Assembly & Delivery:

After completing the overhauling job at our facility, our team transports the airend to the client site for reassembly into the compressor. The next step is condition monitoring during operation. If everything is in order, our team hands over the compressor operation to the client.

meet our engineering
SERVICE TEAM



Shafiqul Islam
Service Engineer



Raihan Sarker
Service Engineer



Kamal Hossain
Service Engineer



Anower Hossain
Service Engineer



Showkat Hossain
Service Engineer



Mainuddin Roni
Service Engineer



Nazrul Gazi
Service Engineer



Mohammad Ali
Service Engineer



Shariful Islam
Service Engineer





Complete Service Center

Global Cynax operates its own facility center for airend overhauling and refurbishment Services. The service center is conveniently located near the Dhaka Export Processing Zone (DEPZ) on the Dhaka-Aricha Highway in Kalampur, Dhamrai, just 50 km from Dhaka city.

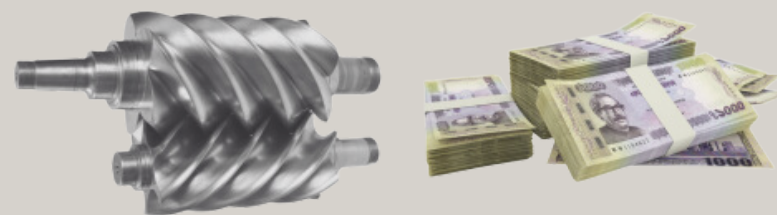
Genuine Bearing Supply

Bearings are vital for the performance of an airend, and replacing all bearings during overhauling or refurbishment is crucial. Using the same brand and part number ensures optimal performance. Global Cynax, an authorized importer and distributor of SKF in Bangladesh, is well-equipped to supply genuine bearings. We also source other reputable brands like TIMKEN, FAG, and INA.



Capability of Airend Handling

The airend is a crucial component of a compressor, often accounting for nearly half the unit's cost. For example, in a \$40,000 screw compressor, the airend may cost around \$15,000 to \$20,000. During transportation or overhauling, it may be at risk of damage, loss, or fire. Global Cynax, with its strong financial stability and good turnover, can fully compensate for any such incidents. Clients can trust us to handle this valuable component securely and without risk.



Own Transportation to Carry Airend

Global Cynax uses a dedicated pickup truck to securely transport airends between client sites and our workshop, ensuring safe and efficient delivery while minimizing the risk of damage or loss.





Satisfied Client



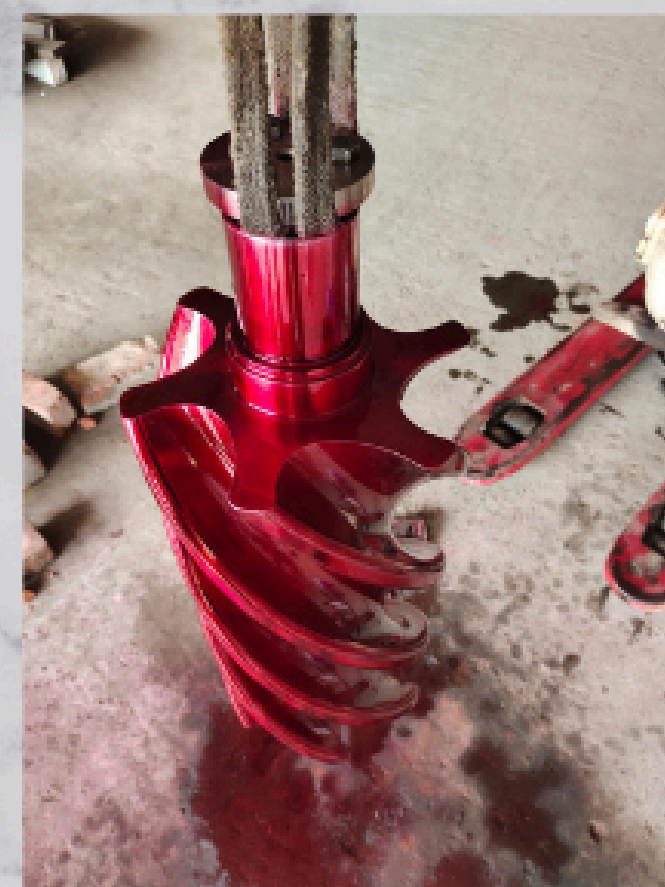
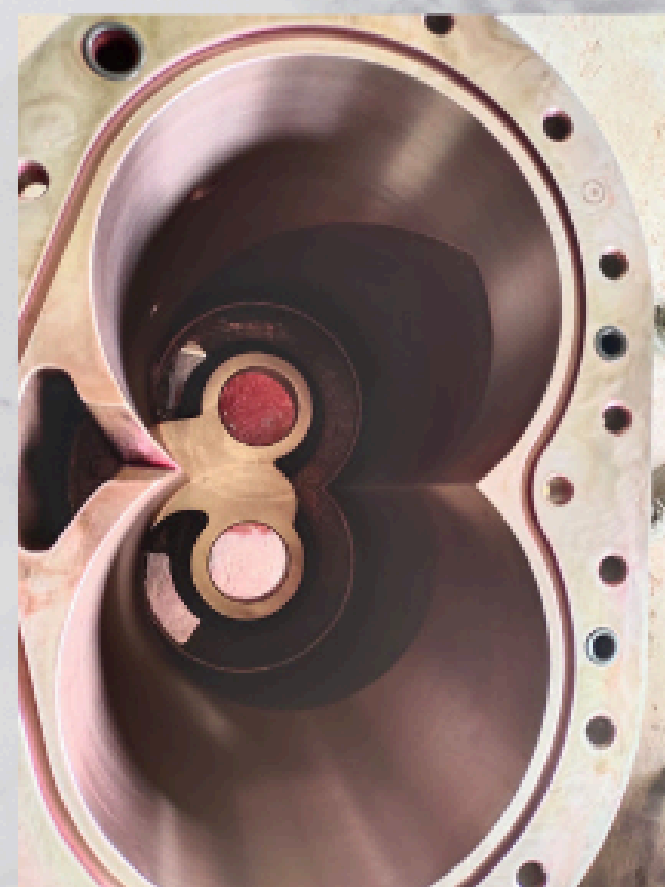
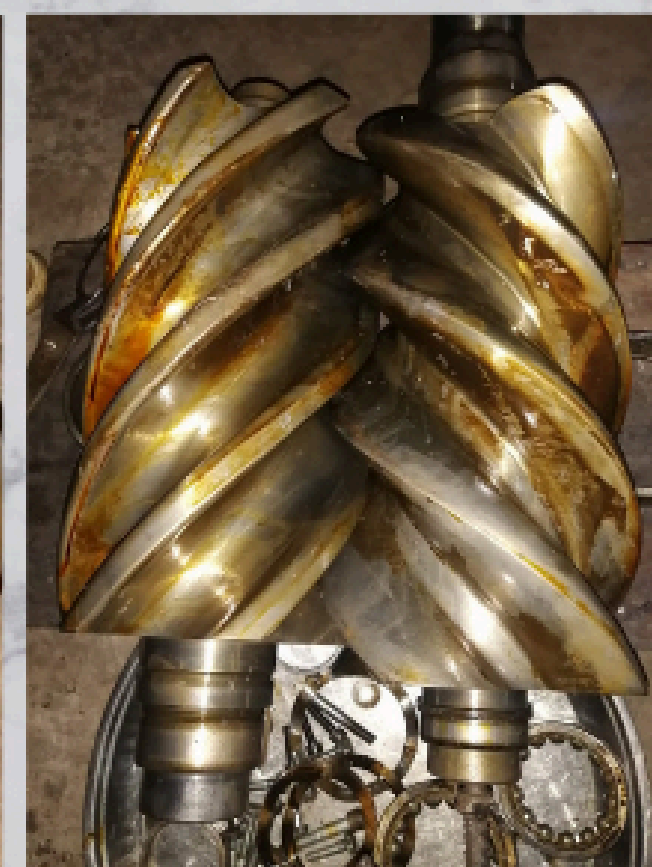
Star Ceramics Limited

Compressor: Atlas Copco
Model: GA55
Capacity: 55kW

Satisfied Client



Acme laboratories Ltd.
Compressor: Atlas Copco
Model: GA 55, 55kW



Satisfied Client



Meghnaghat Power Plant
(Powertek Energy Sdn Bhd)
Compressor: Ingersoll Rand
Model: 110kW

OUR CLIENTS - AIREND OVERHAULING

	BRAND	CAPACITY	YEAR
Heidelberg Cement (Ultratech)	Luitech	160kW	2024
Meghnaghat Power Ltd.	Ingersoll Rand	110kW	2024
Weixing Industriell (BD) Co Ltd	Ingersoll Rand	160kW	2024
Ring Shine Textiles Limited	Ingersoll Rand	110kW (2 unit)	2024
Navana Engineering Ltd. (Pipe)	Ingersoll Rand	30kW	2024
Orion Pharma Ltd.	Atlas Copco	37kW	2024
Global Attire Ltd	Ingersoll Rand	110kW	2024
Bismillah Auto Rice Mills Ltd.	Chinese Brand	22kW	2024
Star Ceramics Ltd.	Atlas Copco	55kW	2024
UP Smart Cards Ltd.	Ingeroll Rand	11kW	2024

OUR CLIENTS - AIREND OVERHAULING

	BRAND	CAPACITY	YEAR
The Acme Laboratories Ltd	Atlas Copco	55kW	2024
Sylhet Gas Field	Luitech	55kW	2024
Weixing Industriel (BD) Co Ltd	Ingersoll Rand	160kW	2024
Enayetpur Spinning Mills Ltd.	Kaeser	30kW	2024
SJ Paper & Plastic Ltd.	Ingersoll Rand	37kW	2024
Heidelbergcement (Scan Cement)	Ingersoll Rand	50kW, 90kW	2023
Haripur Power Ltd.	Ingersoll Rand	45kW	2023
Rangs Motors	Ingersoll Rand	55kW	2023
Appollo Ispat Complex Ltd.	Atlas Copco	75kW	2023
Global Heavy Chemical	Ingersoll Rand	45kW	2023

Contact Us



Dhaka Office:

Suite # A-5, 5th floor, Ring Tower,
32-35 Ring Road, Adabor, Dhaka 1207



Chattogram Office:

Kader Tower (5th Floor),
128 Jubilee Road, Chittagong-4000



+8801999447777, +8801999337777



gc@globalcynax.com



www.globalcynax.com



GLOBAL CYNAX

